



INDEPENDENCE SQUARE BUILDING

400-404 N. Liberty Street, Independence, Missouri



SALE PRICE: \$499,000 | 4,500 SF BUILDING

DEMOGRAPHICS

	1 mile	3 miles	5 miles
Estimated Population	11,316	70,408	138,010
Avg. Household Income	\$60,097	\$72,083	\$79,604

- Historic Independence Square location
- Owner/user opportunity
- Office or retail use
- Roof is five years old



CLICK HERE TO VIEW MORE
LISTING INFORMATION

For More Information Contact:

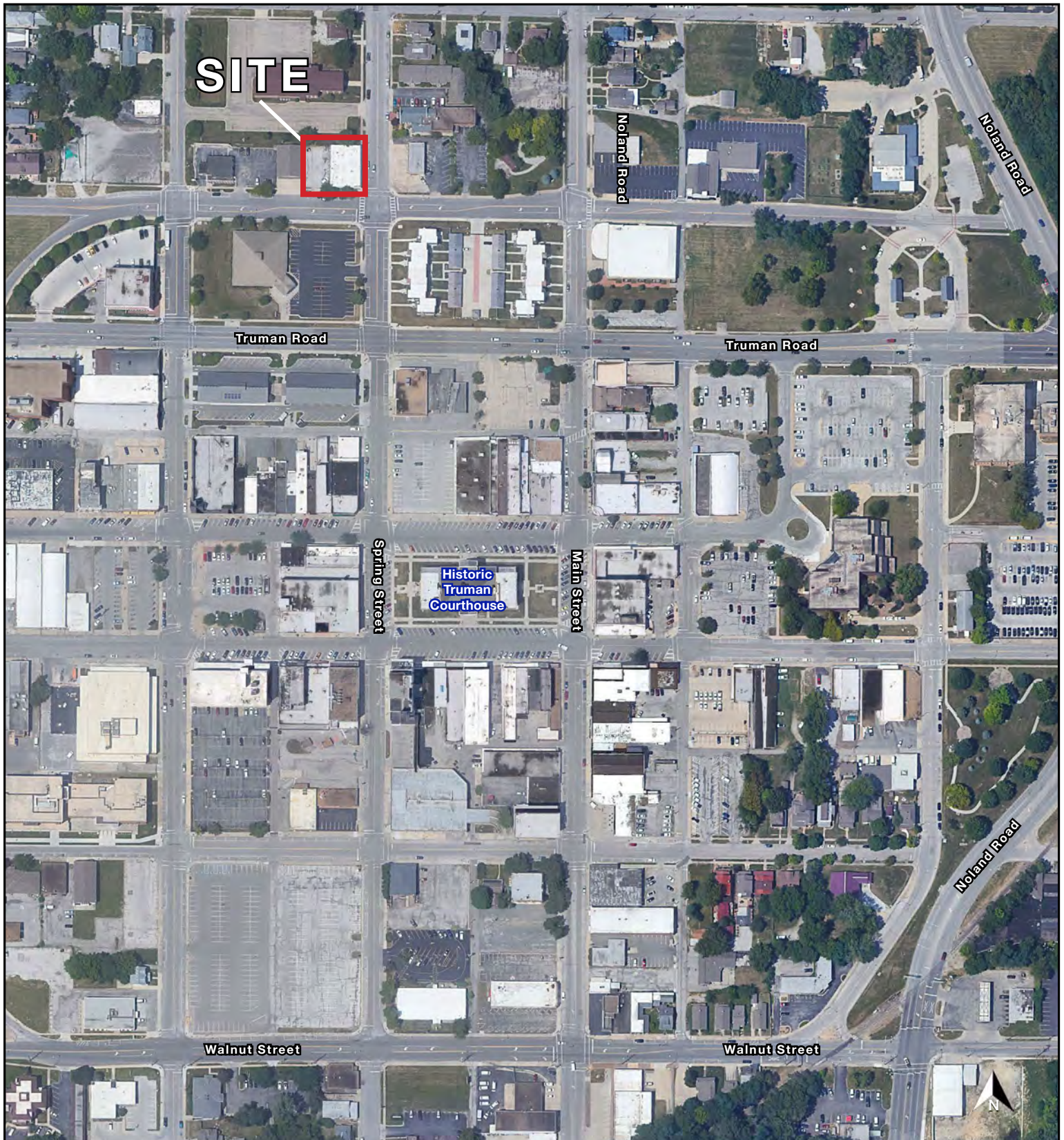
BILL MAAS, CCIM | 816.412.7392 | bmaas@blockandco.com

Exclusive Agent

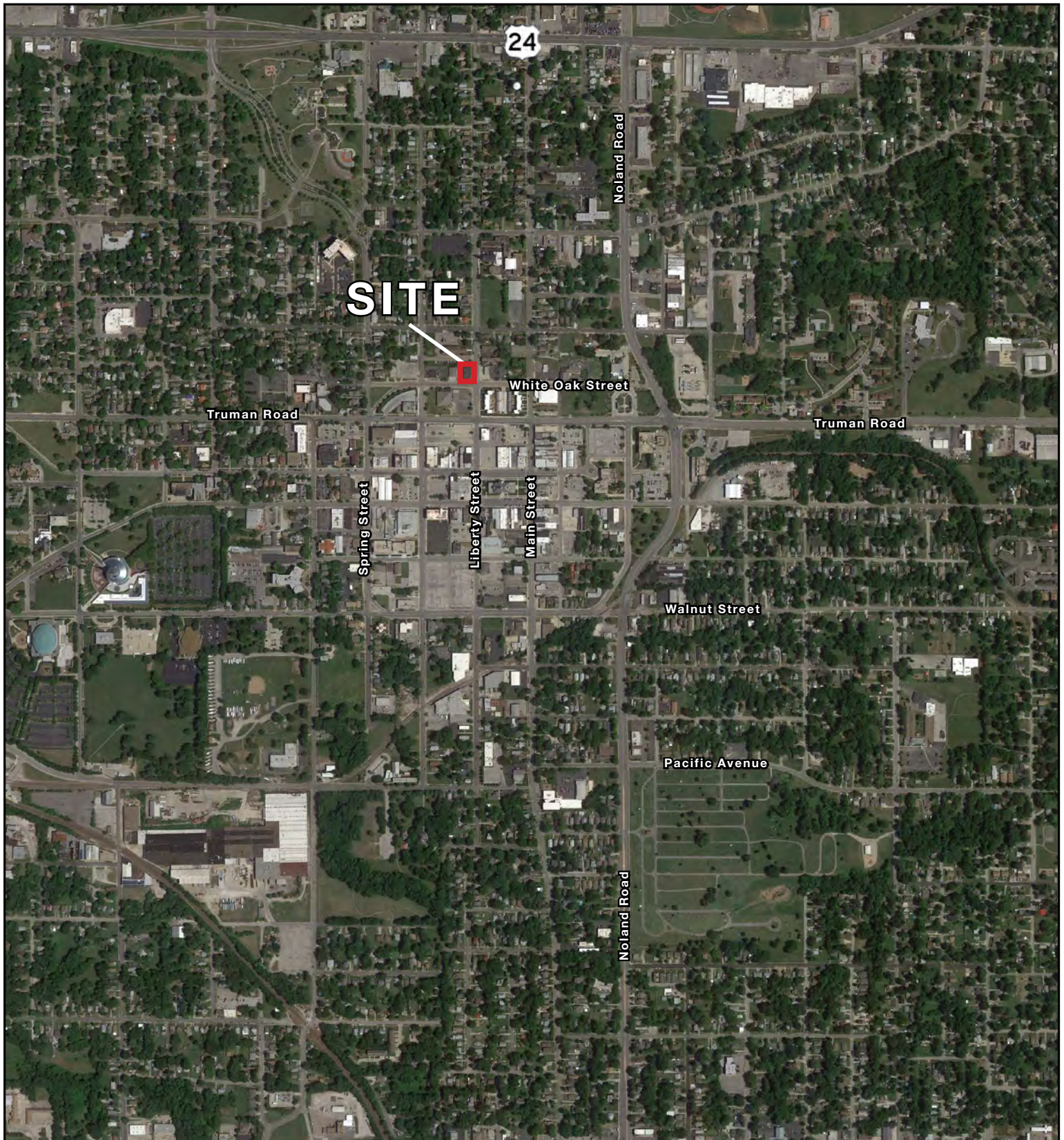
PHOTOS



AERIAL

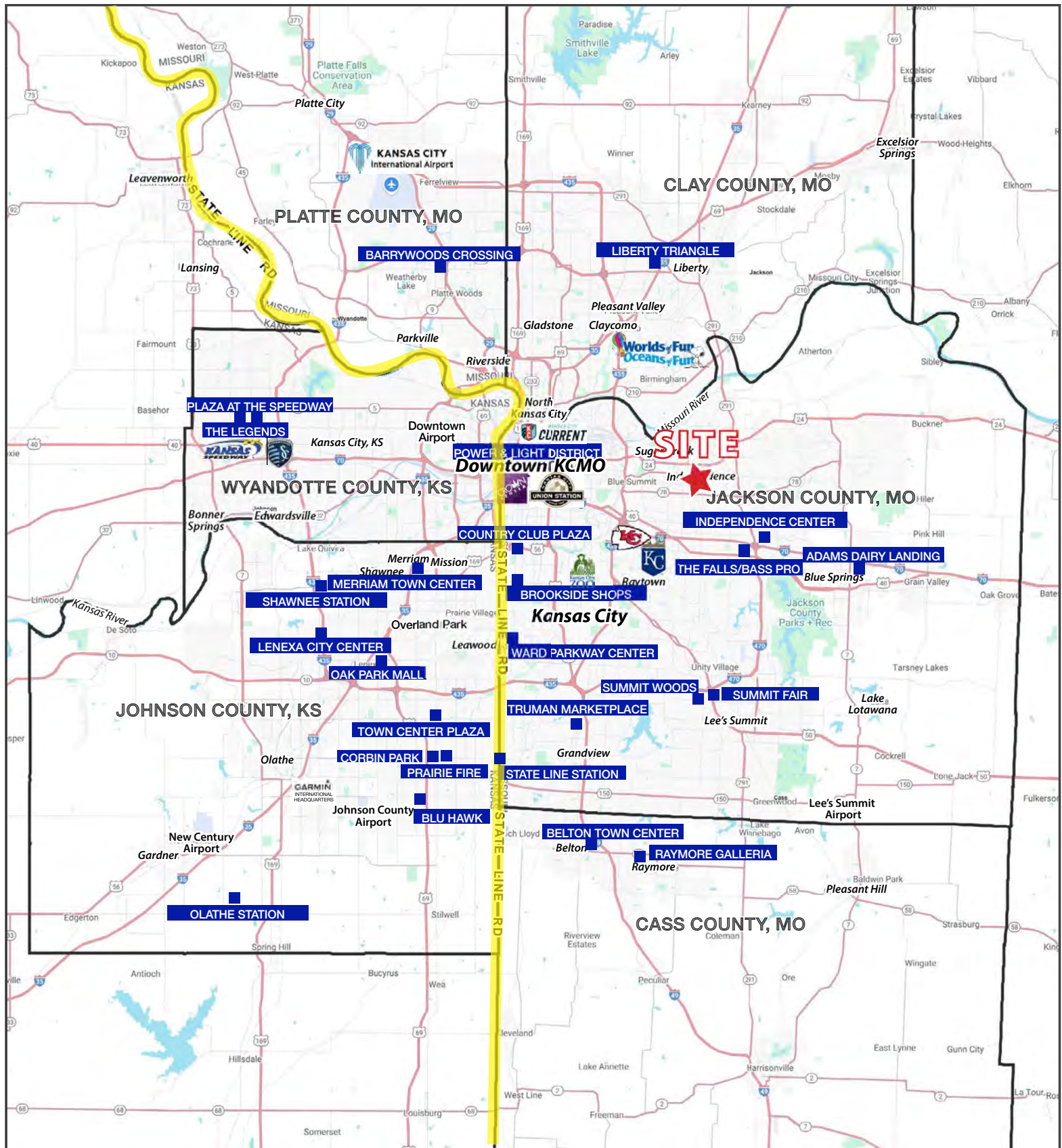


AERIAL



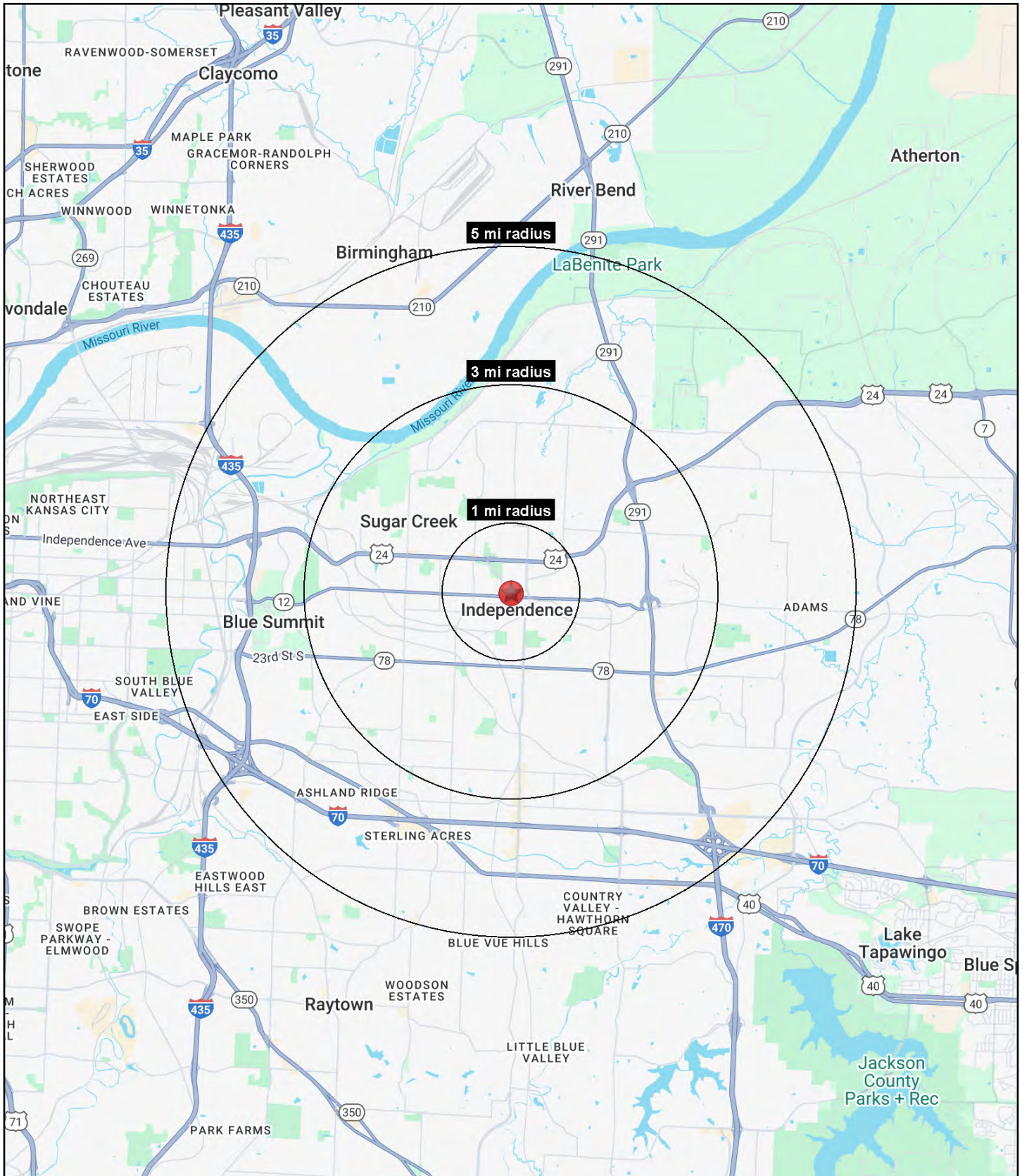
INDEPENDENCE SQUARE BUILDING

400-404 N. Liberty Street, Independence, Missouri



INDEPENDENCE SQUARE BUILDING

400-404 N. Liberty Street, Independence, Missouri





INDEPENDENCE SQUARE BUILDING

400-404 N. Liberty Street, Independence, Missouri

400-404 N. Liberty Street Independence, MO 64050	1 mi radius	3 mi radius	5 mi radius
Population			
2025 Estimated Population	11,316	70,408	138,010
2030 Projected Population	11,181	69,291	136,327
2020 Census Population	11,174	70,451	140,238
2010 Census Population	10,790	68,340	135,290
Projected Annual Growth 2025 to 2030	-0.2%	-0.3%	-0.2%
Historical Annual Growth 2010 to 2025	0.3%	0.2%	0.1%
2025 Median Age	39.7	38.6	38.5
Households			
2025 Estimated Households	4,963	29,755	57,360
2030 Projected Households	4,936	29,487	57,134
2020 Census Households	4,720	29,670	57,691
2010 Census Households	4,637	28,800	55,818
Projected Annual Growth 2025 to 2030	-0.1%	-0.2%	-
Historical Annual Growth 2010 to 2025	0.5%	0.2%	0.2%
Race and Ethnicity			
2025 Estimated White	74.2%	73.4%	70.9%
2025 Estimated Black or African American	12.1%	10.7%	12.7%
2025 Estimated Asian or Pacific Islander	1.3%	1.3%	1.7%
2025 Estimated American Indian or Native Alaskan	0.7%	0.6%	0.6%
2025 Estimated Other Races	11.7%	13.9%	14.1%
2025 Estimated Hispanic	11.5%	14.0%	14.4%
Income			
2025 Estimated Average Household Income	\$60,097	\$72,083	\$79,604
2025 Estimated Median Household Income	\$41,405	\$55,694	\$62,235
2025 Estimated Per Capita Income	\$26,803	\$30,596	\$33,187
Education (Age 25+)			
2025 Estimated Elementary (Grade Level 0 to 8)	5.8%	3.6%	3.4%
2025 Estimated Some High School (Grade Level 9 to 11)	8.7%	7.4%	6.8%
2025 Estimated High School Graduate	33.3%	37.5%	35.9%
2025 Estimated Some College	26.5%	24.6%	23.7%
2025 Estimated Associates Degree Only	7.7%	8.3%	9.2%
2025 Estimated Bachelors Degree Only	11.2%	12.1%	13.8%
2025 Estimated Graduate Degree	6.8%	6.4%	7.3%
Business			
2025 Estimated Total Businesses	552	2,063	3,951
2025 Estimated Total Employees	3,958	17,007	36,134
2025 Estimated Employee Population per Business	7.2	8.2	9.1
2025 Estimated Residential Population per Business	20.5	34.1	34.9